

LEGEND:

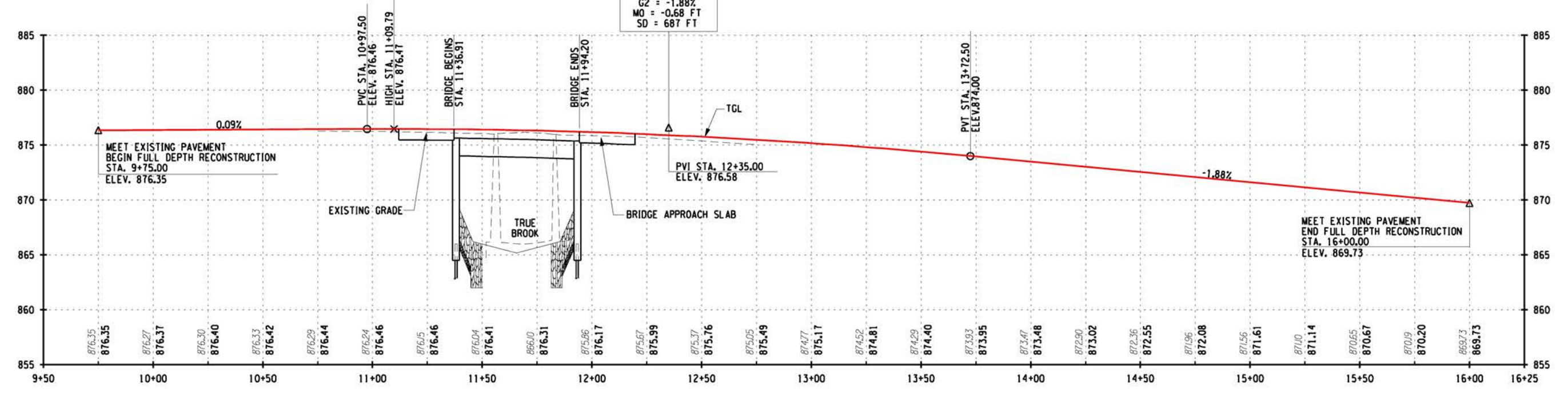
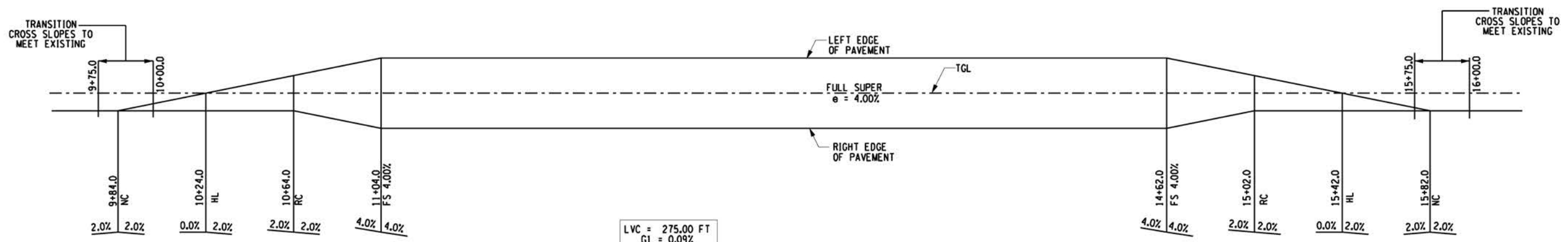
--- DETOUR ROUTE

REPLACEMENT OF TRUE BROOK ROAD
 BRIDGE OVER TRUE BROOK
 PIN 7753.91 B.I.N. 3358320



CLINTON COUNTY
 HIGHWAY DEPARTMENT





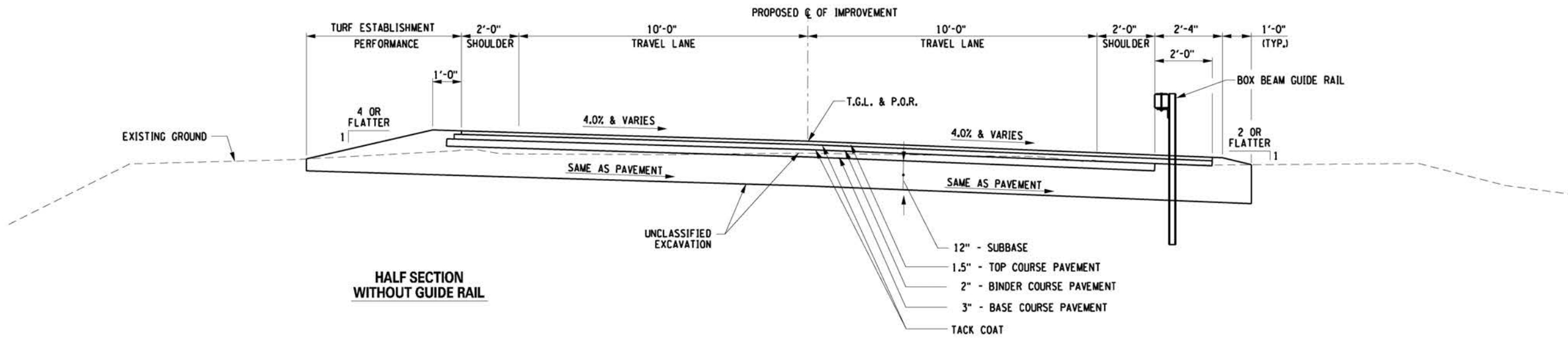
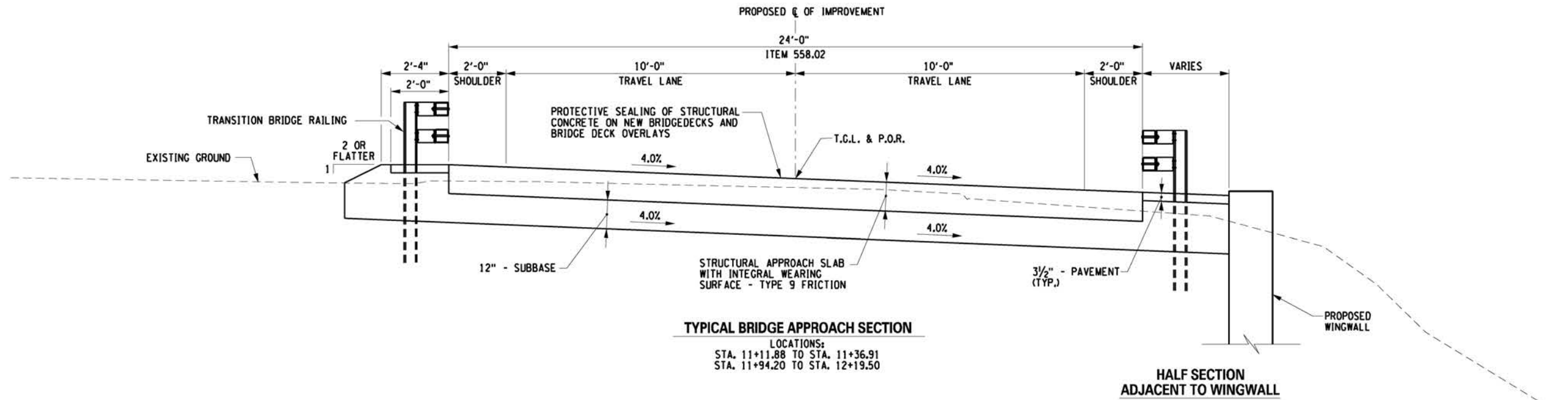
TRUE BROOK ROAD PROFILE

REPLACEMENT OF TRUE BROOK ROAD
BRIDGE OVER TRUE BROOK
PIN 7753.91 B.I.N. 3358320



CLINTON COUNTY
HIGHWAY DEPARTMENT





REPLACEMENT OF TRUE BROOK ROAD
 BRIDGE OVER TRUE BROOK
 PIN 7753.91 B.I.N. 3358320



CLINTON COUNTY
 HIGHWAY DEPARTMENT



RAYMOND A. LEDUC
BARBARA J. LEDUC
(REPUTED OWNERS)
WITH LIFE ESTATE TO
ROBERT R. LECLAIR
INSTR.* 2004-00170050
TM* 239-I-12J

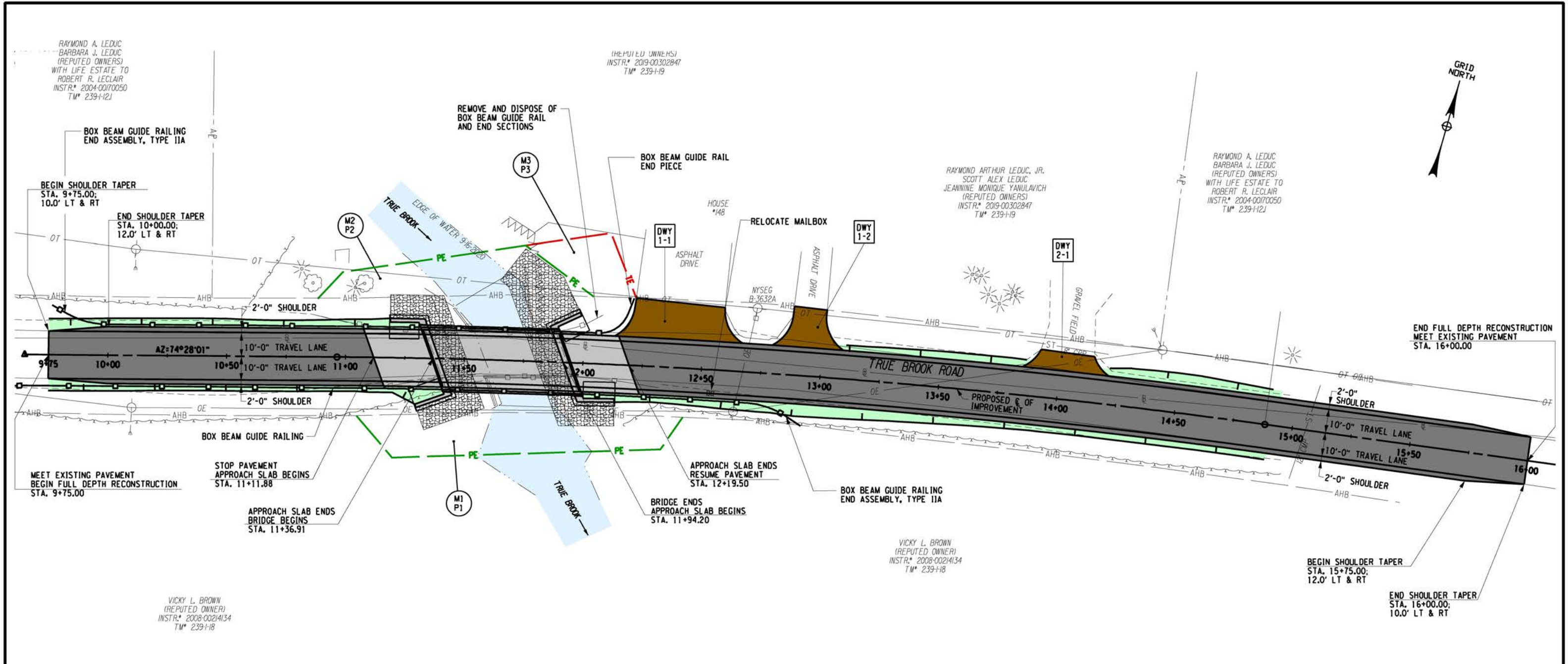
(THE FUI E.D. UNNEHSI)
INSTR.* 2019-00302847
TM* 239-I-19

RAYMOND ARTHUR LEDUC, JR.
SCOTT ALEX LEDUC
JEANNINE MONIQUE YANULAVICH
(REPUTED OWNERS)
INSTR.* 2019-00302847
TM* 239-I-19

RAYMOND A. LEDUC
BARBARA J. LEDUC
(REPUTED OWNERS)
WITH LIFE ESTATE TO
ROBERT R. LECLAIR
INSTR.* 2004-00170050
TM* 239-I-12J

VICKY L. BROWN
(REPUTED OWNER)
INSTR.* 2008-00214134
TM* 239-I-18

VICKY L. BROWN
(REPUTED OWNER)
INSTR.* 2008-00214134
TM* 239-I-18



LINE LEGEND:

- TE — TEMPORARY EASEMENT
- PE — PROPOSED PERMANERY EASEMENT
- AHB — EXISTING HIGHWAY BOUNDARY

LEGEND:

- PROPOSED ROADWAY RECONSTRUCTION
- PROPOSED BRIDGE & APPROACH SLAB
- TRUE BROOK
- DRIVEWAYS
- EARTHWORK LIMIT

**REPLACEMENT OF TRUE BROOK ROAD
BRIDGE OVER TRUE BROOK
PIN 7753.91 B.I.N. 3358320**

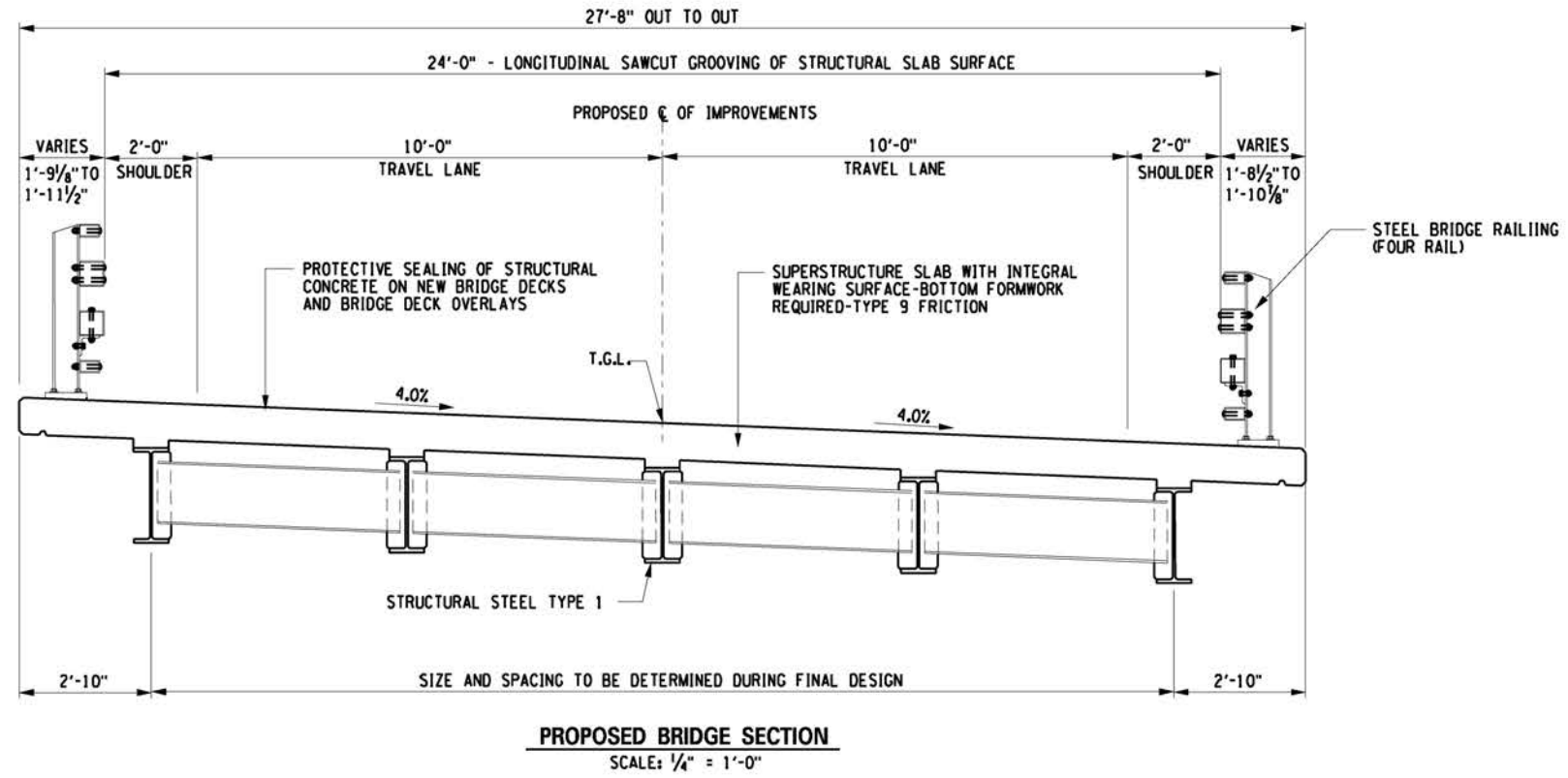


CLINTON COUNTY
HIGHWAY DEPARTMENT



Department of
Transportation





REPLACEMENT OF TRUE BROOK ROAD
BRIDGE OVER TRUE BROOK
PIN 7753.91 B.I.N. 3358320

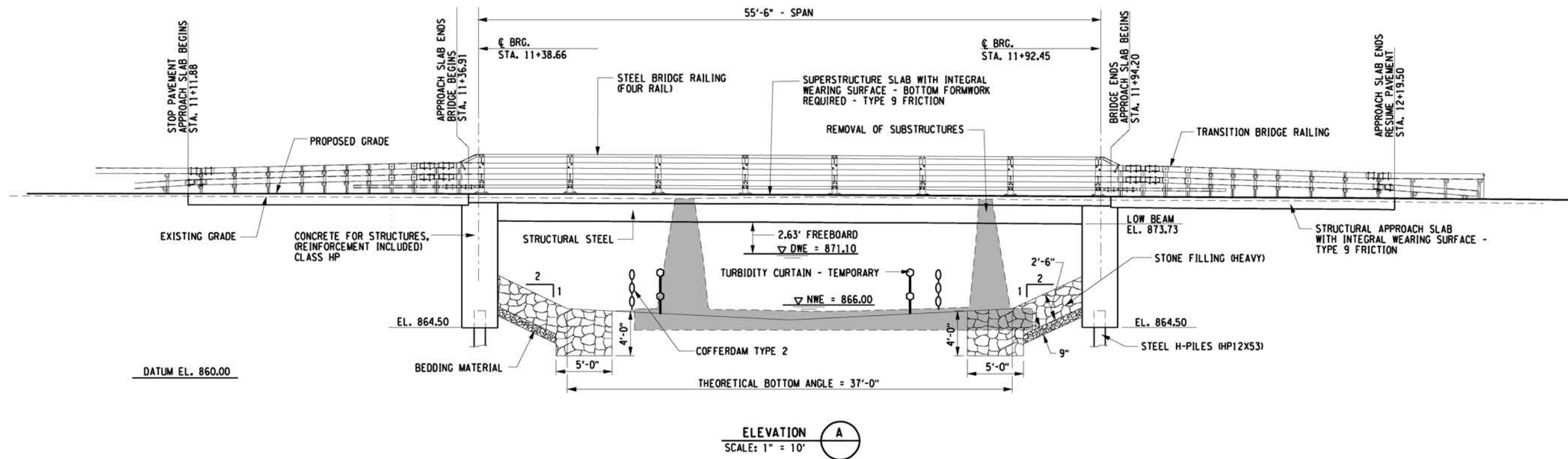


CLINTON COUNTY
HIGHWAY DEPARTMENT



Department of
Transportation

Barton
& **Loguidice**



REPLACEMENT OF TRUE BROOK ROAD
 BRIDGE OVER TRUE BROOK
 PIN 7753.91 B.I.N. 3358320



CLINTON COUNTY
 HIGHWAY DEPARTMENT



Department of
 Transportation

**Barton
 & Loguidice**