

BEGIN SHOULDER TAPER
STA. 12+00.00;
11.3' LT.

END SHOULDER TAPER
STA. 11+75.00;
10.7' LT.

SAWCUT PAVEMENT

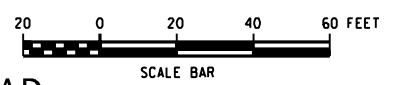
MEET EXISTING PAVEMENT
BEGIN FULL DEPTH RECONSTRUCTION
STA. 11+75.00

PI STA. 13+09.19
Δ= 36°23'20"
R= 225.00 FT
L= 142.90 FT
T= 73.95 FT
ED= 11.84 FT
N 2068038.45
E 644462.28

PI STA. 16+80.24
Δ= 9°02'35"
R= 1425.00 FT
L= 224.91 FT
T= 112.69 FT
ED= 4.45 FT
N 2067995.70
E 644835.90

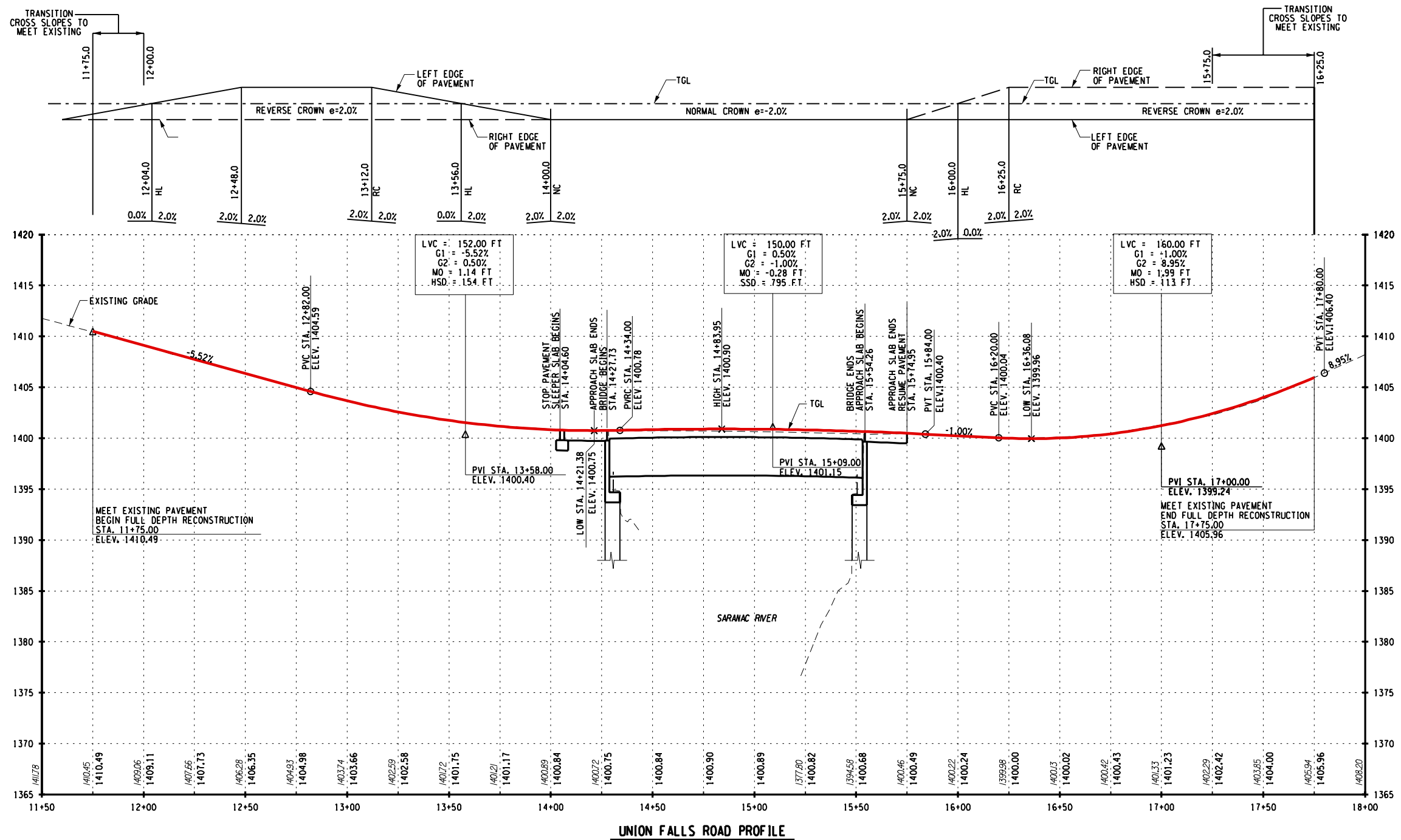
- LEGEND:**
- PROPOSED ROADWAY RECONSTRUCTION
 - PROPOSED BRIDGE AND APPROACH SLAB
 - EARTHWORK LIMIT
 - SARANAC RIVER
 - DRIVEWAYS

**REHABILITATION OF UNION FALLS ROAD
BRIDGE OVER SARANAC RIVER
PIN 7753.98 B.I.N. 3335670**



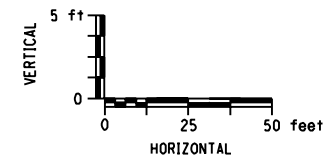
CLINTON COUNTY
HIGHWAY DEPARTMENT





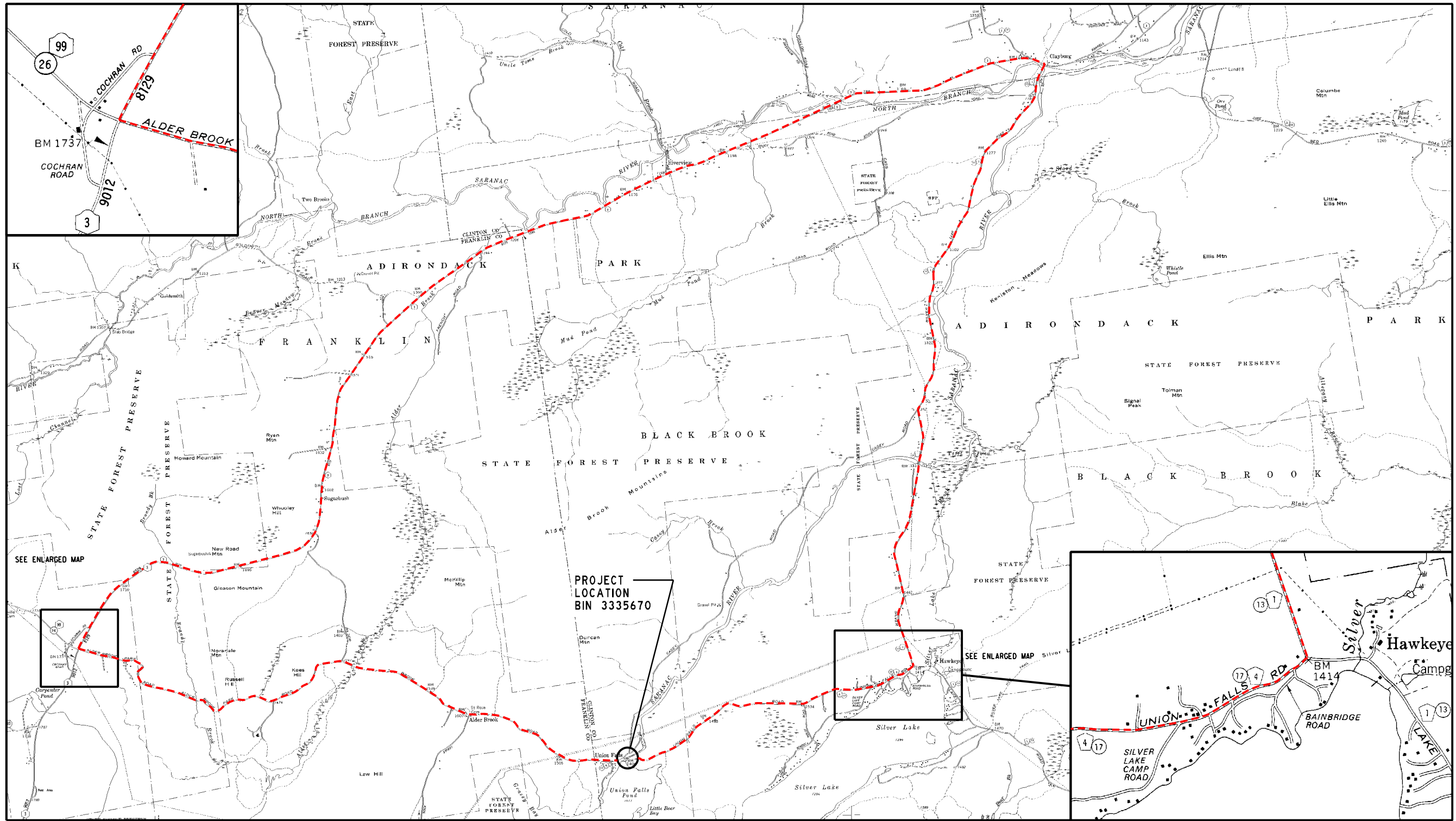
ABBREVIATION:
 FS - FULL SUPER
 HL - HALF LEVEL
 NC - NORMAL CROWN
 RC - REVERSE CROWN

REHABILITATION OF UNION FALLS ROAD
 BRIDGE OVER SARANAC RIVER
 PIN 7753.98 B.I.N. 3335670



CLINTON COUNTY
 HIGHWAY DEPARTMENT





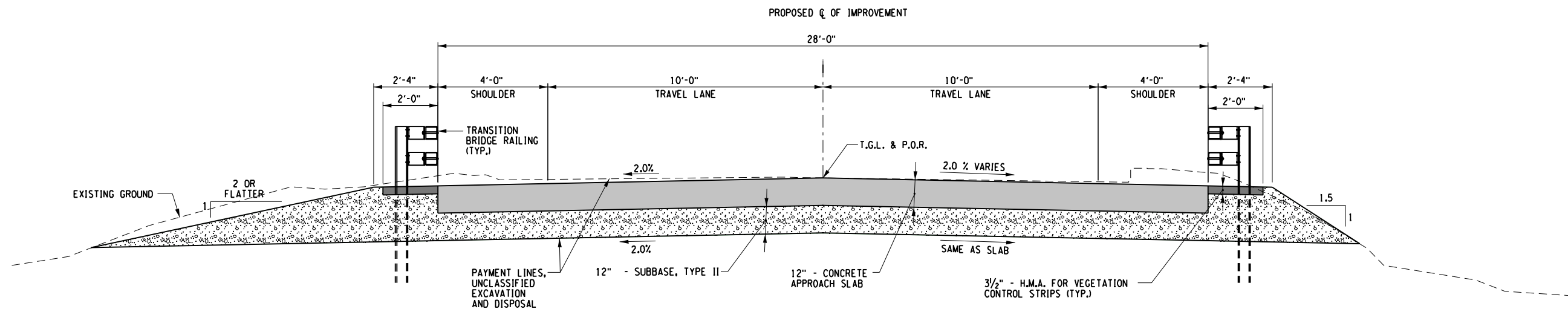
REHABILITATION OF UNION FALLS ROAD
 BRIDGE OVER SARANAC RIVER
 PIN 7753.98 B.I.N. 3335670

LEGEND:
 - - - - - DETOUR ROUTE

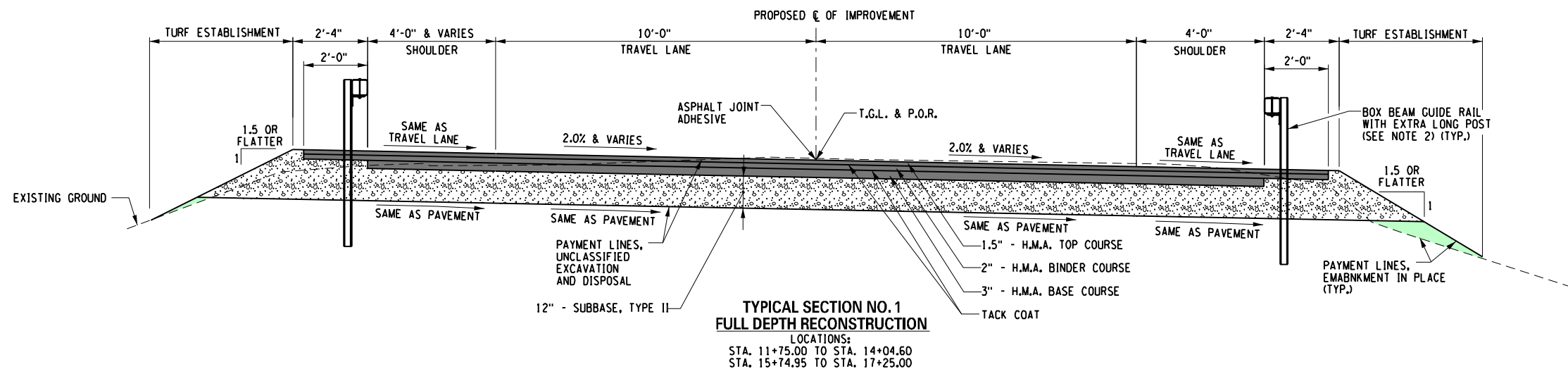


CLINTON COUNTY
 HIGHWAY DEPARTMENT





**TYPICAL SECTION NO. 2
BRIDGE APPROACH SECTION**
 LOCATIONS:
 (SLEEPER SLAB) STA. 14+04.60 TO STA. 14+27.73
 STA. 15+54.26 TO STA. 15+74.95



**TYPICAL SECTION NO. 1
FULL DEPTH RECONSTRUCTION**
 LOCATIONS:
 STA. 11+75.00 TO STA. 14+04.60
 STA. 15+74.95 TO STA. 17+25.00

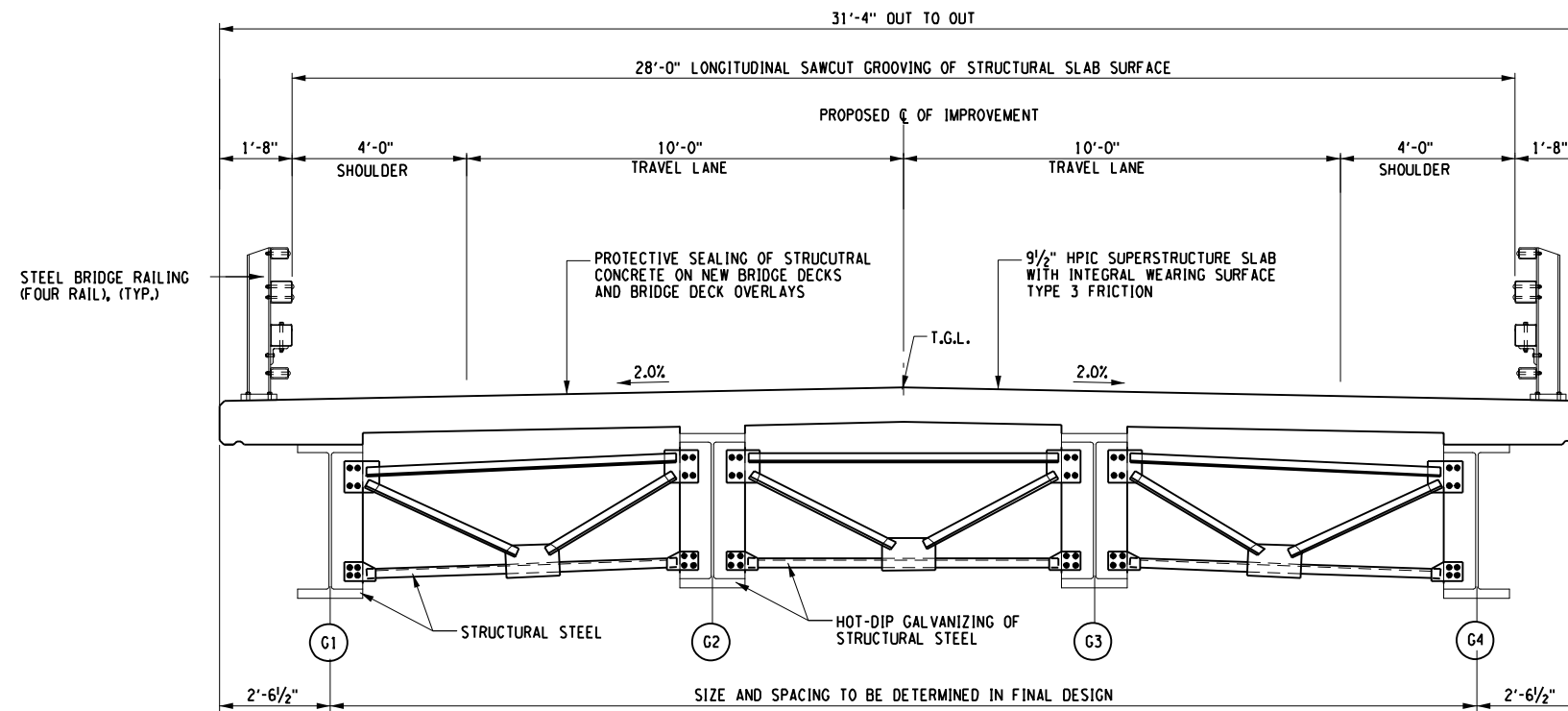
- LEGEND:**
- PROPOSED ROADWAY RECONSTRUCTION
 - PROPOSED BRIDGE AND APPROACH SLAB
 - EARTHWORK LIMIT
 - SUBBASE, TYPE II

**REHABILITATION OF UNION FALLS ROAD
BRIDGE OVER SARANAC RIVER
PIN 7753.98 B.I.N. 3335670**



CLINTON COUNTY
HIGHWAY DEPARTMENT





PROPOSED BRIDGE SECTION

REHABILITATION OF UNION FALLS ROAD
 BRIDGE OVER SARANAC RIVER
 PIN 7753.98 B.I.N. 3335670

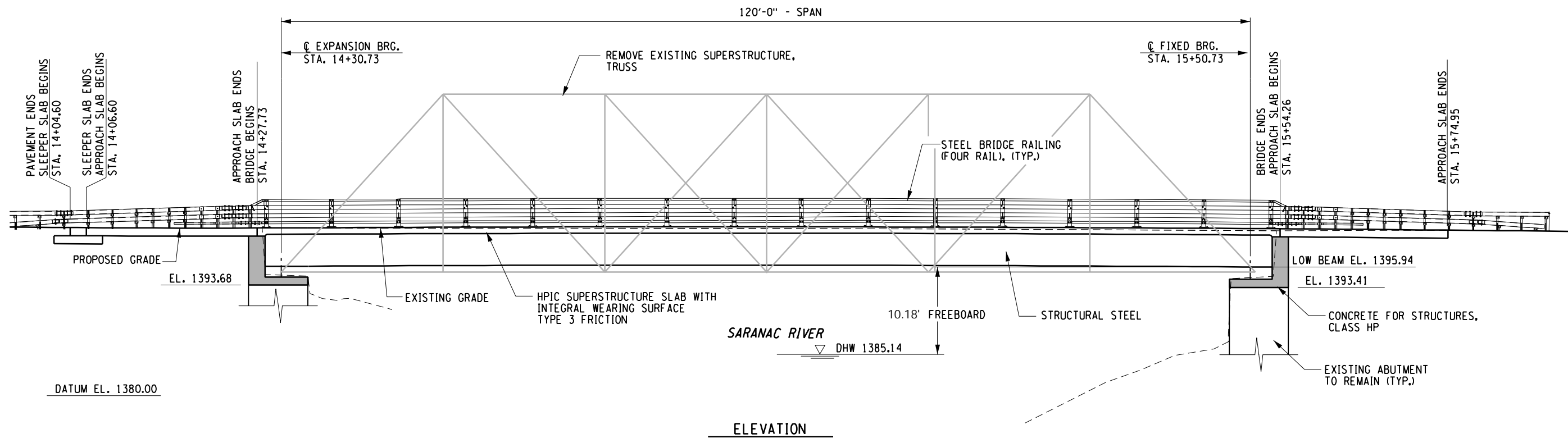


CLINTON COUNTY
 HIGHWAY DEPARTMENT



Department of
 Transportation





REHABILITATION OF UNION FALLS ROAD
 BRIDGE OVER SARANAC RIVER
 PIN 7753.98 B.I.N. 3335670



CLINTON COUNTY
 HIGHWAY DEPARTMENT



Department of
 Transportation

